

# Hotspot for heating comfort

- › Heat generators for targeted heating and higher levels of comfort



# STIEBEL ELTRON is full of energy

As a family company driven by innovation, throughout product development and manufacture we maintain a clear focus on environmentally responsible, efficient and convenient building services for your home. Because we're full of energy and ready to shape the future!

**The future belongs to  
environmentally responsible and  
efficient building services.**

Since 1924 we have been developing highly efficient products and maintain a clear focus on electricity as our primary energy source. Electricity which, nowadays, is increasingly obtained from renewables.

We rely on approximately 3700 employees around the world and their expertise at every stage of development – from the initial design, right through to the manufacture of the final product. The result – efficient and innovative solutions for domestic hot water, heat, ventilation and cooling. With our extensive product range, we always have the right option to help you prepare your home for the demands of the future – today.

At our head office in Holzminden, Germany, we have also established a clear focus on green technology – with the Energy Campus, our flagship project for sustainable construction which makes careful use of resources. This training and communication centre brings together high quality architecture and communication technology. And as a Plus Energy building, it generates more energy than it consumes. This is in keeping with our brand promise “Full of energy” and creates a space where the spirit of STIEBEL ELTRON can be experienced both in theory and practice.



**ENERGY  
CAMPUS**

# Electricity – the energy source of the future

Renewable energies will become the norm for the future of energy supply as more and more people recognise the benefits of green and self-generated power from renewable sources.

## **The goal of the energy transition is independence from fossil fuels**

Fossil fuels are in decline on the electricity market – too harmful to the climate and ever more scarce. Nowadays, alternative energies using the sun, wind and water are being used to generate green power.

So it is only logical to act in good time to convert the largest energy consumer in your home – the heating system – to these futureproof forms of energy. As nearly 80 % of energy consumed in the home is used for heating and hot water, this makes perfect sense. So there is plenty of scope for implementing the energy transition in your own home.




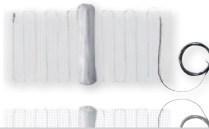




“My home has a place for everything – for cooking, for playing, for being together, as well as for enjoying peace and quiet. And my favourite spot is somewhere warm and cosy where I can get away from it all.”

# Electric heating systems – flexible heating comfort

Electric heating systems have much to offer, particularly with regard to heating comfort. They are significantly faster to respond than most other heating systems on the market, and can be more accurately controlled. If you want to heat up your bathroom quickly in the morning, they are the perfect choice. Furthermore, they require only minimum installation and maintenance effort since neither pipework nor chimney nor chimney sweep are required. The operating costs can be quite low, too – with an electric heating system, you can take advantage of cheaper economy tariffs. And, if electricity is drawn from a renewable source, your heating can even be CO<sub>2</sub> neutral.

	RADIANT HEATERS	NATURAL STONE HEATERS	BATHROOM RADIATORS	ELECTRIC UNDERFLOOR HEATING
	Page 08	Page 10	Page 12	Page 14
				
	PREMIUM	PREMIUM	PLUS	PLUS
Model	RHB   RHW	SPH   MH	BHE Plus	FTB   FTT C
Connected load	300–900 W	350–1650 W	500–1750 W	160–1120 <sup>1)</sup> W
Installation	Vertical   horizontal	Vertical   horizontal	Vertical	In the floor
Additional controller required	■	■		■
Suitable for renovation and new build	■	■	■	■
Fully wired	■		■	
Design versions	2	6	1	2
Weight	7.8–23.4 kg	21–70 kg	17.5–34 kg	0.6–2.6 kg

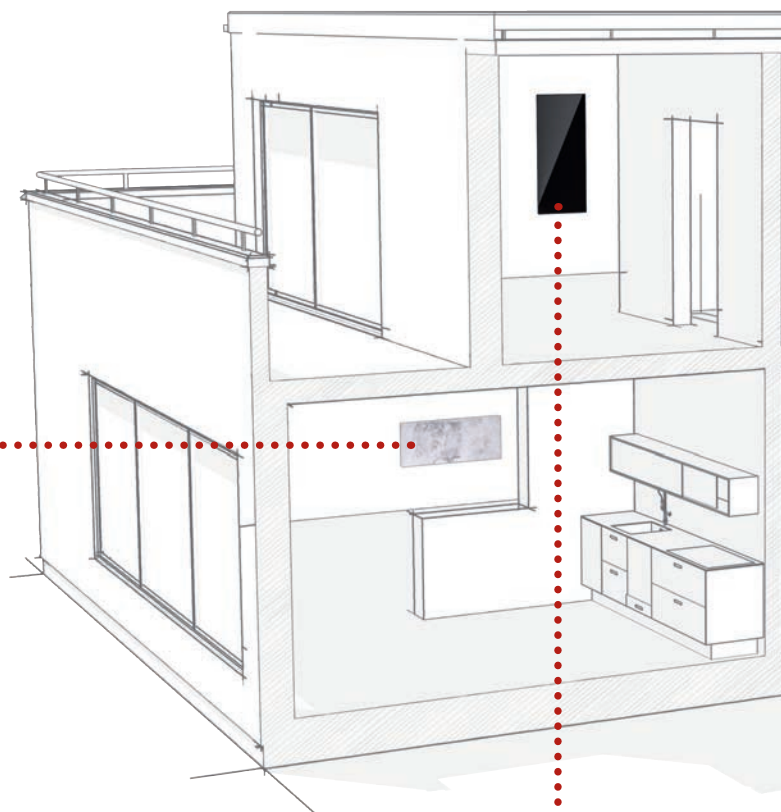
<sup>1)</sup> Can be combined.

# Cosy warmth to suit any and every ambience

To have warmth, exactly where and when you need it, is just what electric comfort heating is all about. And visual appeal is a given, no matter where in the home heating is required.

## Natural stone heaters

The combination of natural materials and heat has always had a particular appeal. Not only are these heaters particularly attractive to look at, they also give out a very pleasant gentle heat.



## Radiant heaters

Radiated heat is perceived as particularly pleasant – and rarely has it been provided so decoratively as by our radiant heaters, which deliver heat exactly where it is needed.



### Electric underfloor heating

Walking barefoot on a warm floor is the height of comfort. The low installed height of electric underfloor heating makes retrofitting easy. Consequently, even when you're modernising, new options for greater heating comfort open up.

### Bathroom radiators

Radiators that have been specifically designed for bathrooms provide rapid heat and keep towels warm and dry, a welcome additional benefit.





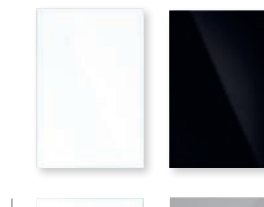
# RHB | RHW

## RADIANT HEATERS: HEAT SOURCES THAT ALSO RADIATE ELEGANCE

The frameless, very slim design and minimalist glass surface suit contemporary interiors. Our radiant heaters emit a special form of heat which is perceived as particularly pleasant. The all-round bezel on the back of the appliance will hide the wall mounting bracket and power connection post-installation.

### Cosy warmth

A glass heater can be a striking interior design feature. No matter which version you choose – black or white – the special surface reflects light in a way that adds depth to the entire room.



RTU TC electronic room temperature controller

### Perfect combination

The room temperature controllers from STIEBEL ELTRON are of an equally elegant design. Combine them with radiant heaters and you can rest assured that the Ecodesign Directive is effortlessly fulfilled.\*

## Benefits for your home

- › Radiant heater – ideal as a supplementary or booster heater
- › Pleasant radiated heat
- › Clear design with high grade glass surface (black or white)
- › Can be installed vertically or horizontally
- › Additional controller required

	PREMIUM			
Model	RHB 300	RHB 500	RHB 700	RHB 900
	234422	234423	234424	234425
Connected load	W 280	470	660	850
Power supply	-/Hz 1/N/PE~230 V/50/-	1/N/PE~230 V/50/-	1/N/PE~230 V/50/-	1/N/PE~230 V/50/-
Rated current	A 1.2	2.0	2.9	3.7
Height/Width/Depth	mm 600/600/49	600/1000/49	600/1400/49	600/1800/49
Weight	kg 7.8	12.9	18.2	23.4
IP-Rating	IP24	IP24	IP24	IP24

Model	RHW 300	RHW 500	RHW 700	RHW 900
	234426	234427	234428	234429
Connected load	W 280	470	660	850
Power supply	-/Hz 1/N/PE~230 V/50/-	1/N/PE~230 V/50/-	1/N/PE~230 V/50/-	1/N/PE~230 V/50/-
Rated current	A 1.2	2.0	2.9	3.7
Height/Width/Depth	mm 600/600/49	600/1000/49	600/1400/49	600/1800/49
Weight	kg 7.8	12.9	18.2	23.4
IP-Rating	IP24	IP24	IP24	IP24

\*Due to the requirements of the Ecodesign Directive, the product must only be operated with controllers that have electronic room temperature control, day of week control and adaptive control of the start of heating, e.g. RTU-TC, RTU-S UP and SRC C digital.

# SPH | MH...

## NATURAL STONE HEATERS: COSY WARMTH DELIVERED WITH INDIVIDUAL CHARM

These natural stone panels not only look stunning, they also give out a very pleasant heat. The striking use of different types of polished stone adds a special touch to the design of any interior.

### Every model absolutely natural

As every panel is made from natural stone into which only a thin wire is embedded, every heater is unique in colour and structure. Consequently, they lend any bathroom and living room a very special and individual kind of charm.



RTU-S UP electronic room temperature controller

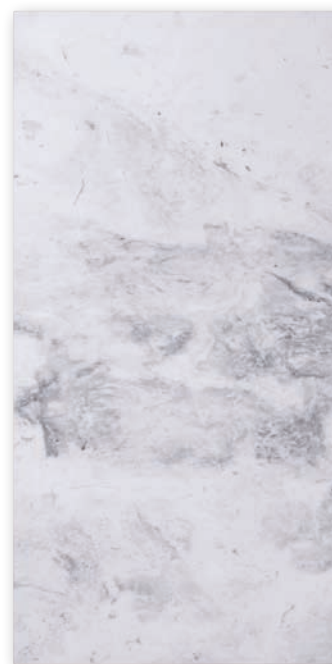
### Meeting individual and official heating requirements

With the STIEBEL ELTRON room temperature controllers, the level of heat can be individually controlled, making them compliant with the Ecodesign Directive.\*

### Benefits for your home

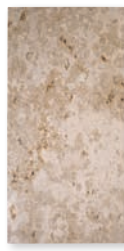
- › Radiant heater – ideal as a supplementary or booster heater
- › Pleasant radiated heat
- › High quality natural stone in five different designs
- › Can be installed vertically or horizontally
- › Protection: IP 66
- › Additional controller required

MHG | Galaxis





Galaxis



Jura



Sahara



Prinos



Soapstone

## PREMIUM

Model	SPH 35 E	MHG 35 E	MHJ 35 E	MHS 35 E	MHP 35 E
	<b>233666</b>	<b>233642</b>	<b>233648</b>	<b>233654</b>	<b>233660</b>
Connected load	W 350	350	350	350	350
Power supply	-/Hz 1/N~230 V/50/60	1/N~230 V/50/60	1/N~230 V/50/60	1/N~230 V/50/60	1/N~230 V/50/60
Rated current	A 1.5	1.5	1.5	1.5	1.5
Height/Width/Depth	mm 400/600/70	400/600/70	400/600/70	400/600/70	400/600/70
Weight	kg 21	21	21	21	21
IP-Rating	IP66	IP66	IP66	IP66	IP66
Model	SPH 65 E	MHG 65 E	MHJ 65 E	MHS 65 E	MHP 65 E
	<b>233667</b>	<b>233643</b>	<b>233649</b>	<b>233655</b>	<b>233661</b>
Connected load	W 650	650	650	650	650
Power supply	-/Hz 1/N~230 V/50/60	1/N~230 V/50/60	1/N~230 V/50/60	1/N~230 V/50/60	1/N~230 V/50/60
Rated current	A 2.8	2.8	2.8	2.8	2.8
Height/Width/Depth	mm 400/1000/70	400/1000/70	400/1000/70	400/1000/70	400/1000/70
Weight	kg 35	35	35	35	35
IP-Rating	IP66	IP66	IP66	IP66	IP66
Model	SPH 85 E	MHG 85 E	MHJ 85 E	MHS 85 E	MHP 85 E
	<b>233668</b>	<b>233644</b>	<b>233650</b>	<b>233656</b>	<b>233662</b>
Connected load	W 850	850	850	850	850
Power supply	-/Hz 1/N~230 V/50/60	1/N~230 V/50/60	1/N~230 V/50/60	1/N~230 V/50/60	1/N~230 V/50/60
Rated current	A 3.7	3.7	3.7	3.7	3.7
Height/Width/Depth	mm 500/1000/70	500/1000/70	500/1000/70	500/1000/70	500/1000/70
Weight	kg 44	44	44	44	44
IP-Rating	IP66	IP66	IP66	IP66	IP66
Model	SPH 115 E	MHG 115 E	MHJ 115 E	MHS 115 E	MHP 115 E
	<b>233669</b>	<b>233645</b>	<b>233651</b>	<b>233657</b>	<b>233663</b>
Connected load	W 1150	1150	1150	1150	1150
Power supply	-/Hz 1/N~230 V/50/60	1/N~230 V/50/60	1/N~230 V/50/60	1/N~230 V/50/60	1/N~230 V/50/60
Rated current	A 5	5	5	5	5
Height/Width/Depth	mm 600/1000/70	600/1000/70	600/1000/70	600/1000/70	600/1000/70
Weight	kg 52	52	52	52	52
IP-Rating	IP66	IP66	IP66	IP66	IP66
Model	SPH 145 E	MHG 145 E	MHJ 145 E	MHS 145 E	MHP 145 E
	<b>233670</b>	<b>233646</b>	<b>233652</b>	<b>233658</b>	<b>233664</b>
Connected load	W 1450	1450	1450	1450	1450
Power supply	-/Hz 1/N~230 V/50/60	1/N~230 V/50/60	1/N~230 V/50/60	1/N~230 V/50/60	1/N~230 V/50/60
Rated current	A 6.3	6.3	6.3	6.3	6.3
Height/Width/Depth	mm 600/1250/70	600/1250/70	600/1250/70	600/1250/70	600/1250/70
Weight	kg 62	62	62	62	62
IP-Rating	IP66	IP66	IP66	IP66	IP66
Model	SPH 165 E	MHG 165 E	MHJ 165 E	MHS 165 E	MHP 165 E
	<b>233671</b>	<b>233647</b>	<b>233653</b>	<b>233659</b>	<b>233665</b>
Connected load	W 1650	1650	1650	1650	1650
Power supply	-/Hz 1/N~230 V/50/60	1/N~230 V/50/60	1/N~230 V/50/60	1/N~230 V/50/60	1/N~230 V/50/60
Rated current	A 7.2	7.2	7.2	7.2	7.2
Height/Width/Depth	mm 600/1350/70	600/1350/70	600/1350/70	600/1350/70	600/1350/70
Weight	kg 70	70	70	70	70
IP-Rating	IP66	IP66	IP66	IP66	IP66

\*Due to the requirements of the Ecodesign Directive, the product must only be operated with controllers that have electronic room temperature control, day of week control and adaptive control of the start of heating, e.g. RTU-TC, RTU-S UP and SRC C digital.

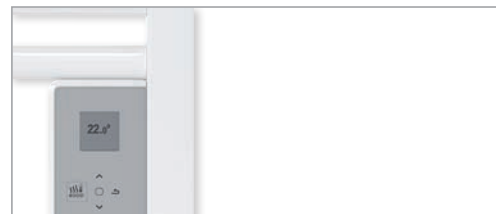
# BHE Plus

## BATHROOM RADIATORS: ADDED VALUE WITH ADDED ENJOYMENT

The BHE Plus series of bathroom radiators effortlessly combine function and design. They are ideal supplementary heaters to ensure the warmth you require is supplied all year round. Moreover, they also warm and dry towels, which can easily be hung at multiple levels.

### Heating control to make your wishes come true

The user friendly position of the programming unit enables easy access to temperature control. The comfort functions of the integral controller highlight the efficiency and high quality features of the appliance.



### Benefits for your home

- › Electric bathroom radiator
- › Factory-filled with process medium for purely electrical operation
- › Can also be connected to the hot water heating network
- › Version with integral 1 kW rapid heater
- › Premium design with circular pipes
- › Controls with backlit LCD
- › With infinitely variable temperature selection
- › Protection: IP 24

		PLUS			
Model		BHE 50 Plus 239141	BHE 75 Plus 238713	BHE 100 Plus 238714	BHE 175 T Plus 238715
Connected load	kW	0.5	0.75	1	1.75
Output, direct heater rod	kW	0.5	0.75	1	0.75
Height/Width/Depth	mm	1090/500/117	1590/500/117	1830/550/117	1590/500/130
Weight	kg	12	19	23	20
Colour		commercial white, RAL 9016	commercial white, RAL 9016	commercial white, RAL 9016	commercial white, RAL 9016



# FTB | FTT C

## ELECTRIC UNDERFLOOR HEATING: WARM TO THE SOLES OF YOUR FEET

How lovely it is to have warm feet! The heating mat makes that morning trek across the bathroom tiles a veritable pleasure.

### Comfort underfoot for all

The low installed height of the FTT heating mat enables it to be installed under tiled floors in new build and in modernisation projects. The FTB is even suitable for wet room showers.



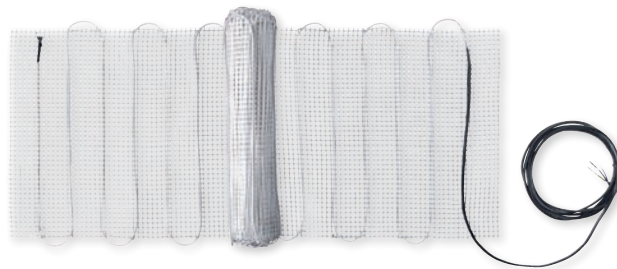
### Strong connection

The heating mats can also be used in conjunction with DHW underfloor heating. The central heating is on during the heating season, while the mat ensures a warm floor during spring and autumn.

### Benefits for your home

- › Electric underfloor heating – ideal for the bathroom
- › Even temperature distribution across the floor
- › Independent of the existing heating system
- › Suitable for new build, renovation and modernisation thanks to low installed height
- › With infinitely variable temperature selection
- › Additional controller required

FTT C



		PLUS				
Model		FTB 160	FTT 160 C	FTT 240 C	FTT 320 C	FTT 400 C
		<b>234834</b>	<b>234287</b>	<b>234288</b>	<b>234289</b>	<b>234290</b>
Connected load	W	160	160	240	320	400
Power supply		1/N/PE ~ 230 V	1/N/PE ~ 230 V	1/N/PE ~ 230 V	1/N/PE ~ 230 V	1/N/PE ~ 230 V
Frequency	Hz	50/60	50/60	50/60	50/60	50/60
Height/Width/Length	mm	3/200/4000	3/500/2000	3/500/3000	3/500/4000	3/500/5000
Surface	m <sup>2</sup>	0.8	1	1.5	2	2.5

Model		FTT 480 C	FTT 640 C	FTT 800 C	FTT 960 C	FTT 1120 C
		<b>234291</b>	<b>234292</b>	<b>234293</b>	<b>234294</b>	<b>234295</b>
Connected load	W	480	640	800	960	1120
Power supply		1/N/PE ~ 230 V	1/N/PE ~ 230 V	1/N/PE ~ 230 V	1/N/PE ~ 230 V	1/N/PE ~ 230 V
Frequency	Hz	50/60	50/60	50/60	50/60	50/60
Height/Width/Length	mm	3/500/6000	3/500/8000	3/500/10000	3/500/12000	3/500/14000
Surface	m <sup>2</sup>	3	4	5	6	7

# Accessories

## DISCOVERING POSSIBILITIES

Our extensive range of accessories allows all our appliances to be adjusted to your personal requirements – for tailor-made comfort. These include advanced control units, booster heaters or comfort sets – STIEBEL ELTRON offers everything from a single source. For that reason, all components are perfectly matched to each other and guarantee a long service life for lasting solutions. For further information on our extensive range of accessories for your STIEBEL ELTRON products, see [www.stiebel-eltron.com](http://www.stiebel-eltron.com) or speak to your local trade partner.

### Electronic room temperature controller

#### Control with “to-the-minute” accuracy

The RTU-TC and RTU-S UP room temperature controllers are equipped with electronic room temperature control and day of week control, as well as adaptive control of the start of heating. They meet the requirements of the Ecodesign Directive in combination with natural stone heaters and radiant heaters.



### Wireless room temperature controller

#### Individual comfort accurately maintained

The SRC C digital makes retrofitting easy, as there is no wiring required. The temperature is always captured just where it's needed. This controller is also compliant with the Ecodesign Directive.



### Accessories for electric underfloor heating

#### All you need for a warm tiled floor

STIEBEL ELTRON offers everything required for installation – from the floor temperature controller with digital weekly timer, to all required installation materials.



Your local trade partner:

---

---

Have we sparked your interest? For further information, see [www.stiebel-eltron.com](http://www.stiebel-eltron.com) or consult your local trade partner.



STIEBEL ELTRON International GmbH | Dr.-Stiebel-Strasse 33 | 37603 Holzminden | Germany  
Email [info@stiebel-eltron.com](mailto:info@stiebel-eltron.com) | [www.stiebel-eltron.com](http://www.stiebel-eltron.com)

**Legal notice** | Although we have tried to make this brochure as accurate as possible, we are not liable for any inaccuracies in its content. Information concerning equipment levels and specifications are subject to modification. The equipment features described in this brochure are non-binding regarding the specification of the final product. Due to our policy of ongoing improvement, some features may have subsequently been changed or even removed. Please consult your local dealer for information about the very latest equipment features. The images in this brochure are for reference only. The illustrations also contain installation components, accessories and special equipment that do not form part of the standard delivery. Reprinting of all or part of this brochure only with the publisher's express permission.